



## 15DBC105 Horizontal Load Cartoner



### *Cost-effective Auto-loader Packed With Versatility*

The 15DBC105 is your economical alternative in the ADCO line of automatic - load horizontal cartoners. It is a left-hand load, continuous motion, auto load cartoner with fully adjustable infeed and transfer conveyor pockets. Designed to be easy on the budget, the 15DBC105 machine has an extended size range and variable speed range of 50 to 125 cartons per minute.

Standard features include: 16' (4.88m) stainless steel frame, ADCO 2-head rotary carton feeder, 4' (1.22m) horizontal powered carton hopper, 12" (305mm) flight chain centers, and 80" (2.03m) infeed conveyor. The automatic product inserter features an adjustable overload sensor system with an automatic retract feature. No product/no carton

and no carton/no load features are combined to make this a fully automatic machine.

Closing options consist of pressurized hot melt glue or tuck style closing. Available options include: ADCO deboss coder, low hopper warning light, digital readouts for size changes, and washdown construction.

Special product handling and indexing options are available and can be quoted upon review of the carton and product to be packaged. Machine speeds may vary depending on carton sizes, style, and the products to be handled. Special options are available to further extend the standard carton size range.

# FEATURES / SPECIFICATIONS

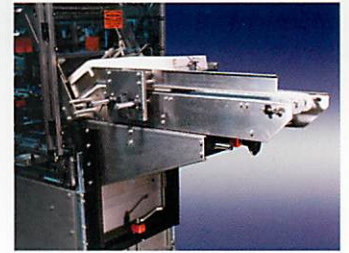
## 15DBC105 Horizontal Load Cartoner

### STANDARD FEATURES:

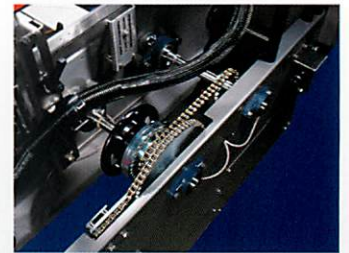
- Left hand load construction
- Continuous motion
- 2-head, 8" (200mm) radius rotary carton feeder
- 4' (1.22m) horizontal powered carton hopper
- Automatic barrel cam inserter with retract system
- 80" (2.03m) product infeed conveyor frame
- Fully adjustable product infeed and transfer chains
- No product/No carton and No carton/No load sensing
- PLC Control System with color touch screen
- 16' (4.88m) long, stainless steel main frame
- #2040 non-captured nickel plated flight chains with 12" lug centers
- 2hp variable speed drive system
- Vertical minor flap tuckers
- Screw adjustments on all overheads
- Scales on all adjustments
- NEMA 12 (IP55) electrical enclosures
- 24vdc control voltage
- Main drive overload protection
- Gull wing barrier guarding - electrically interlocked
- Castors for portability and leveling feet

### OPTIONS:

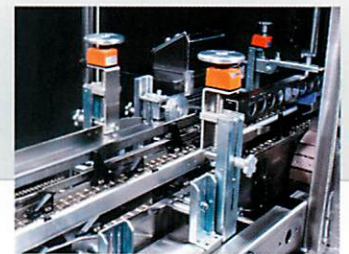
- Pressurized hot melt glue system
- Tablock tuck closure
- Low carton hopper warning light
- Digital readouts for size changes
- Mechanical deboss or ink jet coder
- Group lubrication
- Additional product infeed conveyor length
- Washdown construction
- European Model with CE certification and soft metric construction



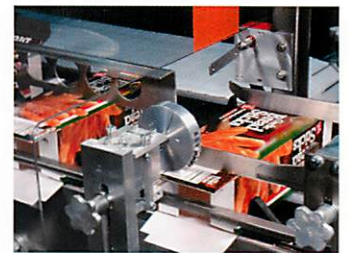
Standard 4' (1.22m) horizontal powered carton hopper provides greater capacity and faster size changeovers.



Dual shafts on flight chain drive provide quick and easy flight lug adjustments.



Optional digital readouts on adjustments are used for consistent and faster carton size changeovers.

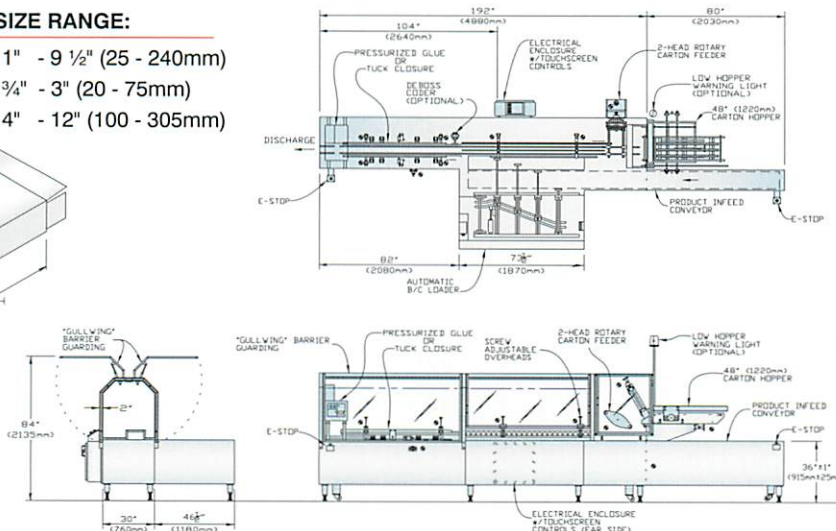
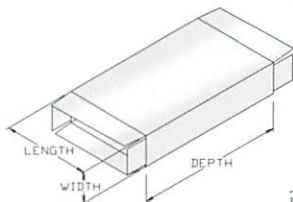


ADCO deboss coder to imprint the date/batch codes on your cartons.

Features and specifications may differ from model shown.

### STANDARD CARTON SIZE RANGE:

Length of opening	1" - 9 1/2" (25 - 240mm)
Width of opening	3/4" - 3" (20 - 75mm)
Depth	4" - 12" (100 - 305mm)



### ADCO MANUFACTURING

2170 Academy Avenue  
Sanger, California, U.S.A., 93657  
Tel: 559-875-5563  
Fax: 559-875-7665  
Email: sales@adcomfg.com



[www.adcomfg.com](http://www.adcomfg.com)



### ADCO MANUFACTURING EUROPE

4 Avon Valley Business Park  
St. Annes Road  
St. Annes, Bristol, U.K. BS4 4EE  
Tel: +44 (0) 117 972 1555  
Fax: +44 (0) 117 972 1881  
Email: sales@adcomfg.co.uk